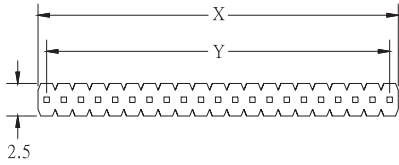


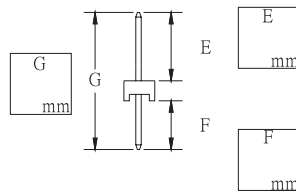
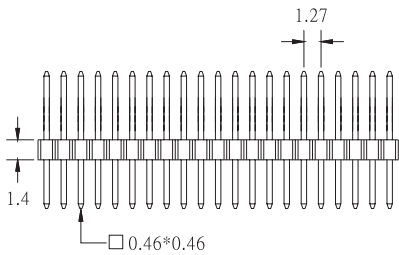
C09b

PIN HEADER SINGLE ROW STRAIGHT (H : 1.4mm)

PITCH: 1.27mm



X	1.27*POSITION NO.
Y	1.27*(POSITION NO.-1)



1. NO. OF CONTACT	2. CONTACT MATERIAL
02 TO 50	A: BRASS B: PHOSPHOR BRONZE
3. CONTACT PLATING	4. INSULATOR COLOR
T: TIN PLATED S: SELECTIVE G: GOLD FLASH A: 5u" INCH GOLD B: 10u" INCH GOLD C: 15u" INCH GOLD D: 30u" INCH GOLD	1. BLACK
5. PIN LENGTH	
E / F / G	

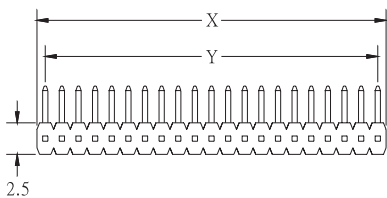
HOW TO ORDER:

C09b - - - - - / E / F / G

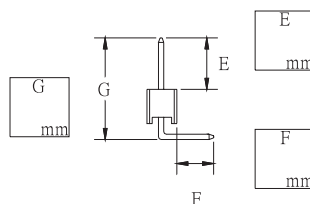
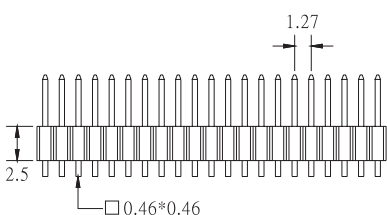
C10

PIN HEADER SINGLE ROW RIGHT ANGLE (H : 2.5mm)

PITCH: 1.27mm



X	1.27*POSITION NO.
Y	1.27*(POSITION NO.-1)



1. NO. OF CONTACT	2. CONTACT MATERIAL
02 TO 50	A: BRASS B: PHOSPHOR BRONZE
3. CONTACT PLATING	4. INSULATOR COLOR
T: TIN PLATED S: SELECTIVE G: GOLD FLASH A: 5u" INCH GOLD B: 10u" INCH GOLD C: 15u" INCH GOLD D: 30u" INCH GOLD	1. BLACK
5. PIN LENGTH	
E / F / G	

HOW TO ORDER:

C10 - - - - - / E / F / G

C