

C08s

BOX HEADER SMT TYPE (1.27mm * 2.54mm)

PITCH: 1.27mm

SPECIFICATIONS

Material

Insulator : Nylon 6T, glass reinforced, rated UL 94V-0

Contact : Phosphor Bronze

Electrical

Current Rating : 1 Amp

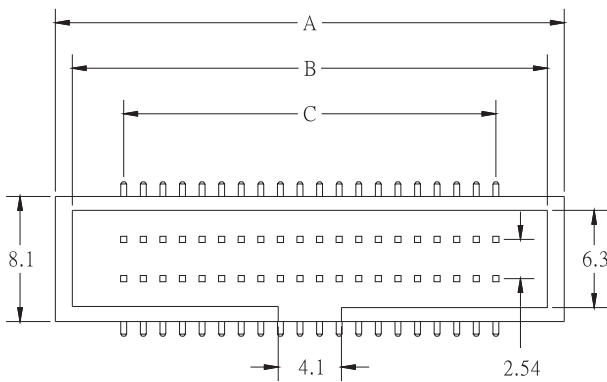
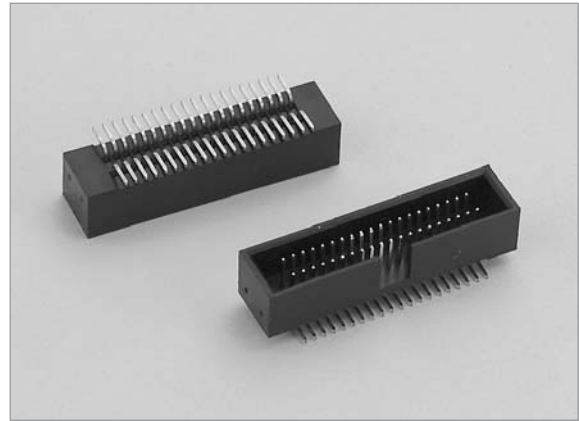
Contact Resistance : 30 mΩ max.

Insulation Resistance : 1000 MΩ min.

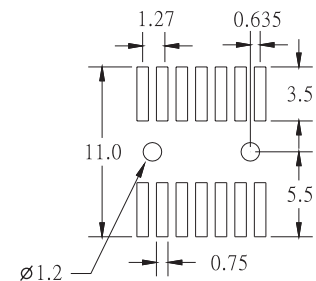
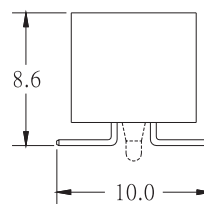
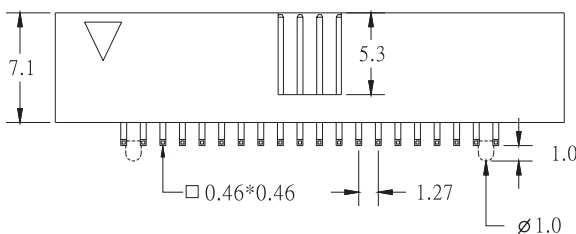
Dielectric Withstanding Voltage :250V AC for 1minute

Operating Temperature : -40°C to +105°C

◆ Mating Suggestion : A07a series.



| POSITION | A | B | C |
|----------|-------|-------|-------|
| 10 | 13.95 | 11.55 | 5.08 |
| 14 | 16.49 | 14.29 | 7.62 |
| 16 | 17.76 | 15.36 | 8.89 |
| 20 | 20.30 | 17.90 | 11.43 |
| 26 | 24.11 | 21.71 | 15.24 |
| 30 | 26.65 | 24.25 | 17.78 |
| 34 | 29.19 | 26.79 | 20.32 |
| 40 | 33.00 | 30.60 | 24.13 |
| 50 | 39.35 | 36.95 | 30.48 |
| 60 | 45.70 | 43.30 | 36.83 |
| 68 | 50.78 | 48.38 | 41.91 |
| 70 | 52.05 | 49.65 | 43.18 |
| 80 | 58.40 | 56.00 | 49.53 |
| 90 | 64.75 | 62.35 | 55.88 |
| 100 | 71.10 | 68.70 | 62.33 |



RECOMMENDED P.C.B LAYOUT

HOW TO ORDER:

C08s - 1 - 2 - 3 - 4 - 5

| 1.NO. OF CONTACT | 2.CONTACT MATERIAL | 3.CONTACT PLATING | 4.SPECIAL FUNCTION | 5.INSULATOR COLOR |
|---|--------------------|---|---|-------------------|
| 10 14 16 20 26 30 34 40 50 60 68 70 80 90 100 | B: PHOSPHOR BRONZE | T: TIN PLATED S: SELECTIVE G: GOLD FLASH A: 5u" INCH GOLD B: 10u" INCH GOLD C: 15u" INCH GOLD D: 30u" INCH GOLD | A: WITH LOCATING PEG B: W/O LOCATING PEG | 1. BLACK |

C