

B20

COMBO CONNECTOR (2 IN 1)

PITCH: 2.54mm

SPECIFICATIONS

Material

Insulator : PBT, glass reinforced, rated UL 94V-0

Contact : Brass

Electrical

Current Rating : 1 Amp

Contact Resistance : 30 mΩ max.

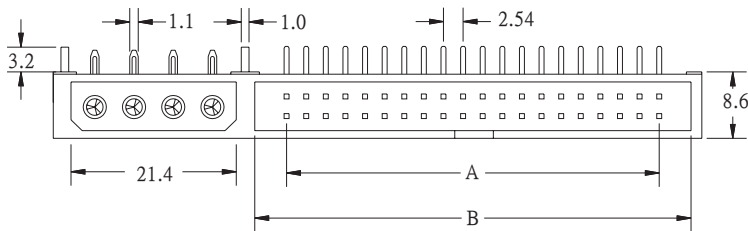
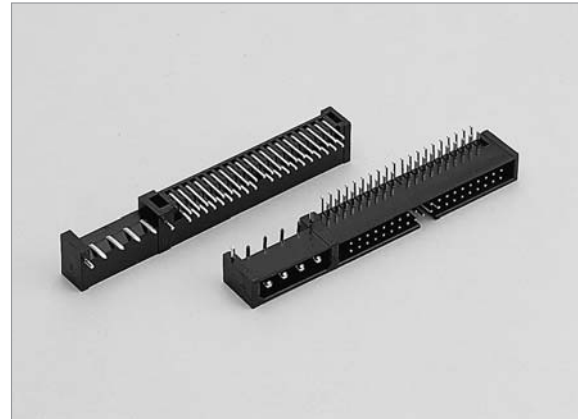
Insulation Resistance : 3000 MΩ min.

Dielectric Withstanding Voltage : 500V AC for 1minute

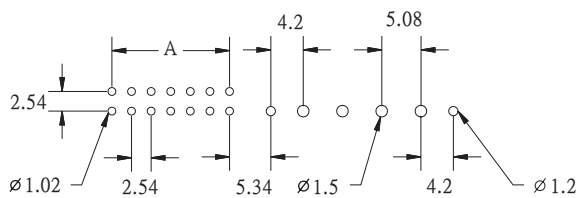
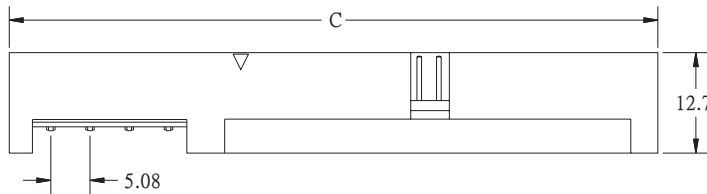
Operating Temperature : -40°C to +105°C

♦ Mating Suggestion : A01, A03a, A35 &

Power Socket series.



POSITION	A	B	C
40	48.26	56.50	84.00
50	60.96	69.20	96.70



RECOMMENDED P.C.B. LAYOUT

HOW TO ORDER:

B20 - - - -

1.NO. OF CONTACT	2.CONTACT MATERIAL	3.CONTACT PLATING	4.INSULATOR COLOR
40 50	A: BRASS	T: TIN PLATED S: SELECTIVE G: GOLD FLASH A: 5u" INCH GOLD B: 10u" INCH GOLD C: 15u" INCH GOLD D: 30u" INCH GOLD	1. BLACK